

University of Missouri System
Undergraduate Financial Aid Summary Report
FY2010FY2014

(Missouri Resident Undergraduate Students)

Report Prepared by
Dr. La Shonda Carter-Boone
Senior Institutional Research Analyst

Office of Institutional Research and Planning
714 Lewis Hall
University of Missouri System

December 2014

IR&P 2014, Report 8

Boonel@umsystem.edu

University of Missouri System
Undergraduate Financial Aid Summary Report
FY2010-FY2014
(Missouri Resident Undergraduates)

Executive Summary

The *Undergraduate Financial Aid Summary Report* includes undergraduate financial aid distribution patterns for the University of Missouri System and the four campuses from fiscal year 2009-10 (FY10) through fiscal year 2013-14 (FY14). In the first part of this report nine questions are addressed at the UM System level:

1. How many students received aid and what type of aid was received?
2. Has grant aid kept pace with increases in tuition and required fees?
3. How has the distribution of institutional gift aid changed over the past five years?
4. How has the distribution of PLUS loans changed over the past five years?
5. What percent of tuition and required fees is met by grant aid?
6. How has the number of aid recipients with need changed by income level?
7. How do financial aid packages vary by income level?
8. For students that have need, what is the average amount of unmet financial need?
9. Can families afford to pay the expected family contribution?

The second part of the report provides campus-level financial aid distribution patterns for the past five years, which may differ from system-level findings.

Systemwide trends highlighted include:

Total aid to students with need is awarded from a combination of aid based on merit and aid based on need. Over the past five years, there has been a 3.5% increase in the overall number of full-time, degree

d1.151Td4(e)-20(y)6(ear)-1(s)-5(8pow)2 11(a-0.c()-6())TJ -4 of)3t8 (? o)-3(0 25 5w 2

The volume of Parent Loans for Undergraduate Students (PLUS loans) increased from FY10 to FY14 for both students with financial need and for students without need. In FY10, 3,786 parents borrowed an average \$9,760 to meet their child's education expenses. Five years later, 3,080 parents borrowed approximately \$6,346 to cover these expenses. Systemwide, the amount of PLUS loans distributed decreased from \$37 million in FY10 to \$19.5 million in FY14 (Table 1.4).

Students with incomes less than \$40,000 have the highest amount of financial need and receive larger total financial aid awards than higher income students. However, lower income students continue to have the largest amount of unmet financial need (Figure 1.4).

The unmet financial need of students increased in all income levels over the past five years (Figure 1.5).

Campus-specific variations from System trends:

Compared to the St. Louis and Kansas City campuses, grant aid distributed to lower income students

The contextual basis of financial aid distribution

Less than 20% of undergraduates attending the University of Missouri pay the entire cost of attendance out-of-pocket. The majority of students receive some type of financial assistance to attend the University in the form of grants, scholarships, work study or loans. In addition, financial assistance comes from a wide variety of sources including the state and federal governments, profit and non-profit organizations, and the University (institutional gift aid). In addition, a significant amount of financial aid that is distributed is based on financial need (i.e. it is documented that the student's family cannot afford the entire cost of attendance). A student must complete a Free Application for Federal Student Aid (FAFSA) in order to determine the extent of financial need and the type and amount of aid based on need that can be awarded.

Many of the tables and figures throughout this report reference terms such as budgeted cost of attendance, financial need, grant aid, and ~~unmet~~ need. Assuming that a student has completed a FAFSA, Figure A.1 is provided to give an overview of how a student's financial aid package is determined.

| | | |
|----------|------------------------------------|--|
| \$23,284 | Budgeted Cost of Attendance | includes tuition & required fees, books, and living expenses |
| (4,265) | Less: Expected Family Contribution | |
| 19,019 | Financial Need | |
| (6,180) | Less: Grant Aid | |
| 12,839 | Remaining Need | |
| (195) | Less: College Work Study | |
| (3,574) | Less: Need-Based Loans | |
| (1,497) | Less: Non-Need Based Loans | |
| \$7,573 | | |

Foremost, a BUDGETED COST OF ATTENDANCE (COA) is determined for every
s

Section I

Systemwide Financial Aid Trends of Full-Time, Degree-Seeking Missouri Undergraduates from FY10 to FY14

PLEASE NOTE: The findings below highlight systemwide trends at the University of Missouri. Financial aid trends may differ by campus and are included in the second part of this report.

1. How many students received aid and what type of aid was received?

The total number of full-time, degree-seeking resident undergraduates steadily increased over the past five years from 31,617 to 32,728, an increase of 3.5%. With this increase in enrollment, there has been a 7.6% increase in the number of students with financial need from 16,863 in FY10 to 18,143 in FY14 (Figure 1.1).

2. Has grant aid kept pace with increases in tuition and required fees?

Over the past five years tuition and required fees increased 11.8% and the budgeted cost of attendance increased 5.8% while average grant aid increased 6.0%. The overall trend is that there is a slightly increasing gap between tuition and required fees and the average grant aid awarded to undergraduates (Figure 1.2).

3. How has the distribution of institutional gift aid changed over the past five years?

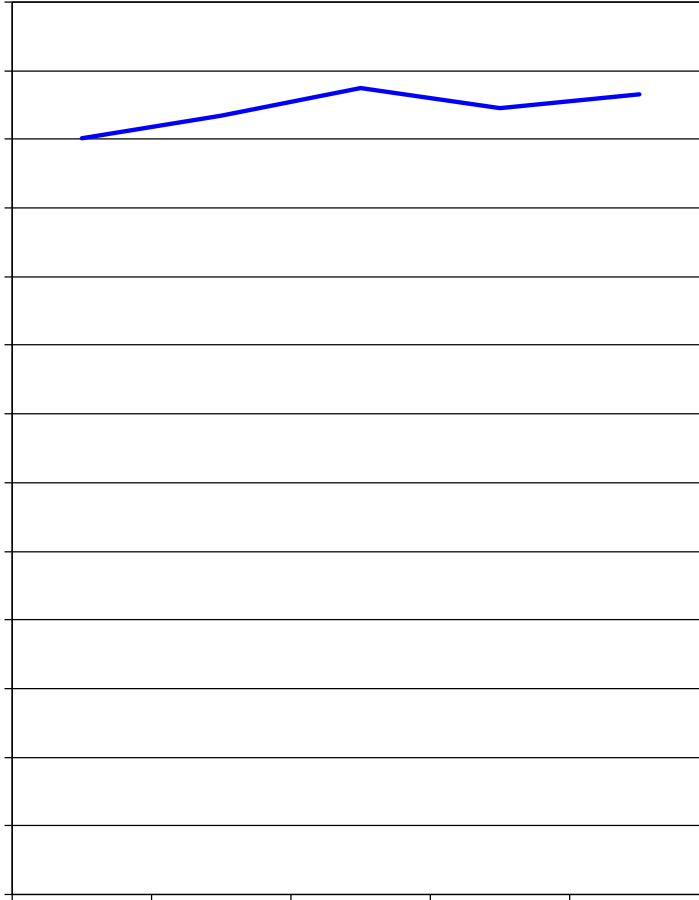
There has been a significant increase in the overall number of students with need that received institutional grant aid, and the average institutional grant award increased nearly \$150 over the past five years. In FY10 there were 11,273 institutional grants awarded to students with need. The average award amount was \$2,794. Five years later there were 14,675 institutional grants awarded to students with need and the average amount of the award was \$2,941. The university continues to award the priority of institutional gift aid to students with financial need (Table 1.1).

4. How has the distribution of PLUS loans changed over the past five years?

The volume of Parent Loans for Undergraduate Students (PLUS loans) decreased from FY10 to FY14 for students with financial need and for students without need. In FY10, 3,786 parents borrowed an average \$9,760 to meet their child's education expenses. Five years later, 3,080 parents borrowed approximately \$6,346 to cover these expenses. Systemwide, the amount of PLUS loans distributed decreased from \$37 million in FY10 to \$19.5 million in FY14.

5. What percent of tuition and required fees is met by grant aid?

| | FY10 | FY11 | FY12 | FY13 | FY14 | 5-yr # Change | 5-yr % Change |
|--------------------------------------|--------------|--------------|--------------|--------------|--------------|------------------|------------------|
| Completed FAFSA, did not have a need | 5,942 | 5,720 | 5,728 | 5,937 | 5,750 | -192 | -3.2% |
| Grant aid, no FAFSA | <u>3,080</u> | <u>3,253</u> | <u>3,118</u> | <u>3,075</u> | <u>3,204</u> | <u>124</u> | 4.0% |



| | FY10 | FY11 | FY12 | FY13 | FY14 | 5-yr # Change | 5-yr % Change |
|-----------------------------|----------|----------|----------|----------|----------|------------------|------------------|
| Budgeted Cost of Attendance | \$22,039 | \$22,680 | \$23,500 | \$22,898 | \$23,310 | \$1,270 | 5.8% |
| Tuition & Required Fees | \$8,464 | \$8,566 | \$9,035 | \$9,305 | \$9,466 | \$1,002 | 11.8% |
| Average Grant Aid | \$4,589 | \$4,483 | \$4,496 | \$4,634 | \$4,863 | \$273 | 6.0% |

Note: Undergraduate Pharmacy and Medical students have been removed from this analysis.

Source: Institutional Characteristics & PeopleSoft

IR&P/LCB 11/14

Table 1.1

| Students with Need | | | | | | | | | | |
|-----------------------|-------------|---------------|-------------|---------------|-------------|---------------|-------------|---------------|-------------|---------------|
| | # of Awards | Average Award | # of Awards | Average Award | # of Awards | Average Award | # of Awards | Average Award | # of Awards | Average Award |
| Type of Award Need* | 3,750 | \$2,002 | 3,182 | \$2,294 | 4,187 | \$2,485 | 5,375 | \$2,314 | 5,993 | \$2,363 |
| Merit | 6,106 | \$3,193 | 6,693 | \$3,094 | 7,106 | \$3,219 | 7,061 | \$3,190 | 7,012 | \$3,348 |
| Other** | 1,417 | \$3,172 | 1,505 | \$3,117 | 1,461 | \$3,595 | 1,328 | \$3,774 | 1,670 | \$3,304 |
| Total | 11,273 | \$2,794 | 11,380 | \$2,874 | 12,754 | \$3,021 | 13,764 | \$2,904 | 14,675 | \$2,941 |
| Students without Need | | | | | | | | | | |
| | # of Awards | Average Award | # of Awards | Average Award | # of Awards | Average Award | # of Awards | Average Award | # of Awards | Average Award |

Table 1.4

| | N | Mean | N | Mean | N | Mean | N | Mean | N | Mean |
|--------------|----------|-------------|----------|-------------|----------|-------------|----------|-------------|----------|-------------|
| With Need* | 2,296 | \$8,922 | 2,733 | \$9,467 | 2,793 | \$9,946 | 2,361 | \$10,247 | 1,925 | \$6,727 |
| Without Need | 1,490 | 11,052 | 1,395 | 11,540 | 1,416 | 12,290 | 1,344 | 12,359 | 1,155 | 5,710 |
| Total | 3,786 | \$9,760 | 4,128 | \$10,168 | 4,209 | \$10,735 | 3,705 | \$11,013 | 3,080 | \$6,346 |

Source: People-

Source: UIDS, PeopleSoft
IR&P/LCB 11/14

Table 1.5 (Continued)

University of Missouri-System

Income Between \$60,000 to \$80,000

| | FY10 | FY11 | FY12 | FY13 | FY14 | FY10 | FY11 | FY12 | FY13 | FY14 | # Change FY10-FY14 | % Change FY10-FY14 |
|--|-----------------------------------|--------------|--------------|--------------|--------------|------|------|------|------|------|-----------------------|-----------------------|
| Total Enrolled for 9 months (N) | 2,408 | 2,534 | 2,521 | 2,399 | 2,338 | | | | | | -70 | -3% |
| | Percent Cost of Attendance | | | | | | | | | | | |
| Cost of Attendance | \$21,781 | \$22,348 | \$23,161 | \$22,756 | \$23,243 | | | | | | \$1,463 | 7% |
| Less Expected Family Contribution* | <u>9,732</u> | <u>9,224</u> | <u>9,276</u> | <u>9,011</u> | <u>8,474</u> | 45% | 41% | 40% | 40% | 36% | -1,258 | -13% |
| Financial Need | 12,048 | 13,124 | 13,885 | 13,745 | 14,769 | 55% | 59% | 60% | 60% | 64% | 2,721 | 23% |
| Less Grant Aid | 3,859 | 3,815 | 3,875 | 4,238 | 4,488 | 18% | 17% | 17% | 19% | 19% | 629 | 16% |
| Unmet Need | \$8,189 | \$9,309 | \$10,009 | \$9,507 | \$10,281 | 38% | 42% | 43% | 42% | 44% | 2,092 | 26% |
| % Grant Aid that Met Financial Need | 32% | 29% | 28% | 31% | 30% | | | | | | | |

Non-Grant Sources to Meet

Remaining Unmet Financial Need

| | FY10 | FY11 | FY12 | FY13 | FY14 | FY10 | FY11 | FY12 | FY13 | FY14 | # Change FY10-FY14 | % Change FY10-FY14 |
|------------------------------|-----------------------------------|---------|---------|---------|---------|------|------|------|------|------|-----------------------|-----------------------|
| | Percent Cost of Attendance | | | | | | | | | | | |
| College Work Study | \$177 | \$114 | \$160 | \$97 | \$94 | 1% | 1% | 1% | 0% | 0% | -82 | -47% |
| Need-based Loans | \$3,537 | \$3,632 | \$3,609 | \$3,484 | \$3,508 | 16% | 16% | 16% | 15% | 15% | -29 | -1% |
| Non-Need Based Loans | 689 | 875 | 939 | 1,002 | 1,052 | 3% | 4% | 4% | 4% | 5% | 364 | 53% |
| Remaining Unmet Need | \$3,786 | \$4,687 | \$5,300 | \$4,923 | \$5,626 | 17% | 21% | 23% | 22% | 24% | 1,840 | 49% |
| *Amount Borrowed to meet EFC | \$3,275 | \$3,152 | \$3,127 | \$3,641 | \$2,828 | 15% | 14% | 14% | 16% | 12% | -447 | -14% |

Income Between \$80,000 to \$100,000

| | FY10 | FY11 | FY12 | FY13 | FY14 | FY10 | FY11 | FY12 | FY13 | FY14 | # Change FY10-FY14 | % Change FY10-FY14 |
|--|-----------------------------------|---------------|---------------|---------------|---------------|------|------|------|------|------|-----------------------|-----------------------|
| Total Enrolled for 9 months (N) | 2,049 | 2,137 | 2,225 | 2,263 | 2,120 | | | | | | 71 | 3% |
| | Percent Cost of Attendance | | | | | | | | | | | |
| Cost of Attendance | \$21,825 | \$22,323 | \$23,170 | \$22,768 | \$23,221 | | | | | | \$1,396 | 6% |
| Less Expected Family Contribution* | <u>14,379</u> | <u>14,180</u> | <u>14,229</u> | <u>13,772</u> | <u>13,290</u> | 66% | 64% | 61% | 60% | 57% | -1,089 | -8% |
| Financial Need | 7,446 | 8,144 | 8,941 | 8,996 | 9,932 | 34% | 36% | 39% | 40% | 43% | 2,485 | 33% |
| Less Grant Aid | 3,055 | 2,964 | 3,017 | 3,036 | 3,350 | 14% | 13% | 13% | 13% | 14% | 295 | 10% |
| Unmet Need | \$4,391 | \$5,179 | \$5,924 | \$5,961 | \$6,582 | 20% | 23% | 26% | 26% | 28% | 2,191 | 50% |
| % Grant Aid that Met Financial Need | 41% | 36% | 34% | 34% | 34% | | | | | | | |

Non-Grant Sources to Meet

Remaining Unmet Financial Need

| | FY10 | FY11 | FY12 | FY13 | FY14 | FY10 | FY11 | FY12 | FY13 | FY14 | # Change FY10-FY14 | % Change FY10-FY14 |
|------------------------------|-----------------------------------|---------|---------|---------|---------|------|------|------|------|------|-----------------------|-----------------------|
| | Percent Cost of Attendance | | | | | | | | | | | |
| College Work Study | \$89 | \$84 | \$101 | \$56 | \$47 | 0% | 0% | 0% | 0% | 0% | -42 | -47% |
| Need-based Loans | \$2,964 | \$3,163 | \$3,240 | \$3,232 | \$3,220 | 14% | 14% | 14% | 14% | 14% | 256 | 9% |
| Non-Need Based Loans | 394 | 493 | 550 | 557 | 614 | 2% | 2% | 2% | 2% | 3% | 220 | 56% |
| Remaining Unmet Need | \$944 | \$1,440 | \$2,033 | \$2,115 | \$2,701 | 4% | 6% | 9% | 9% | 12% | 1,757 | 186% |
| *Amount Borrowed to meet EFC | \$4,778 | \$4,760 | \$4,619 | \$4,485 | \$4,163 | 22% | 21% | 20% | 20% | 18% | -615 | -13% |

Income > \$100,000

| | FY10 | FY11 | FY12 | FY13 | FY14 | FY10 | FY11 | FY12 | FY13 | FY14 | # Change 0 FY10-FY14 | % Change FY10-FY14 |
|--|-----------------------------------|---------------|---------------|---------------|---------------|------|------|------|------|------|-------------------------|-----------------------|
| Total Enrolled for 9 months (N) | 1,267 | 1,506 | 1,795 | 1,810 | 2,062 | | | | | | 795 | 63% |
| | Percent Cost of Attendance | | | | | | | | | | | |
| Cost of Attendance | \$22,190 | \$22,547 | \$23,406 | \$23,175 | \$23,548 | | | | | | \$1,358 | 6% |
| Less Expected Family Contribution* | <u>15,231</u> | <u>16,101</u> | <u>16,777</u> | <u>16,340</u> | <u>16,518</u> | 69% | 71% | 72% | 71% | 70% | 1,287 | 8% |
| Financial Need | 6,959 | 6,446 | 6,629 | 6,834 | 7,030 | 31% | 29% | 28% | 29% | 30% | 71 | 1% |
| Less Grant Aid | 2,818 | 2,625 | 2,734 | 2,795 | 3,065 | 13% | 12% | 12% | 12% | 13% | 247 | 9% |
| Unmet Need | \$4,141 | \$3,820 | \$3,895 | \$4,040 | \$3,965 | 19% | 17% | 17% | 17% | 17% | -176 | -4% |
| % Grant Aid that Met Financial Need | 40% | 41% | 41% | 41% | 44% | | | | | | | |

Non-Grant Sources to Meet

Remaining Unmet Financial Need

| | FY10 | FY11 | FY12 | FY13 | FY14 | FY10 | FY11 | FY12 | FY13 | FY14 | # Change FY10-FY14 | % Change FY10-FY14 |
|------------------------------|-----------------------------------|---------|---------|---------|---------|------|------|------|------|------|-----------------------|-----------------------|
| | Percent Cost of Attendance | | | | | | | | | | | |
| College Work Study | \$59 | \$25 | \$34 | \$17 | \$34 | 0% | 0% | 0% | 0% | 0% | -24 | -41% |
| Need-based Loans | \$2,546 | \$2,628 | \$2,596 | \$2,580 | \$2,568 | 11% | 12% | 11% | 11% | 11% | 23 | 1% |
| Non-Need Based Loans | 739 | 576 | 558 | 634 | 696 | 3% | 3% | 2% | 3% | 3% | -43 | -6% |
| Remaining Unmet Need | \$798 | \$591 | \$707 | \$809 | \$666 | 4% | 3% | 3% | 3% | 3% | -132 | -16% |
| *Amount Borrowed to meet EFC | \$4,853 | \$5,431 | \$5,626 | \$5,219 | \$5,786 | 22% | 24% | 24% | 23% | 25% | 933 | 19% |

Source: PeopleSoft
IR&P/LCB 11/14

Section II

Campus-Level Financial Aid Trends of Full-Time, DegreeSeeking Missouri Undergraduates from FY10to FY14

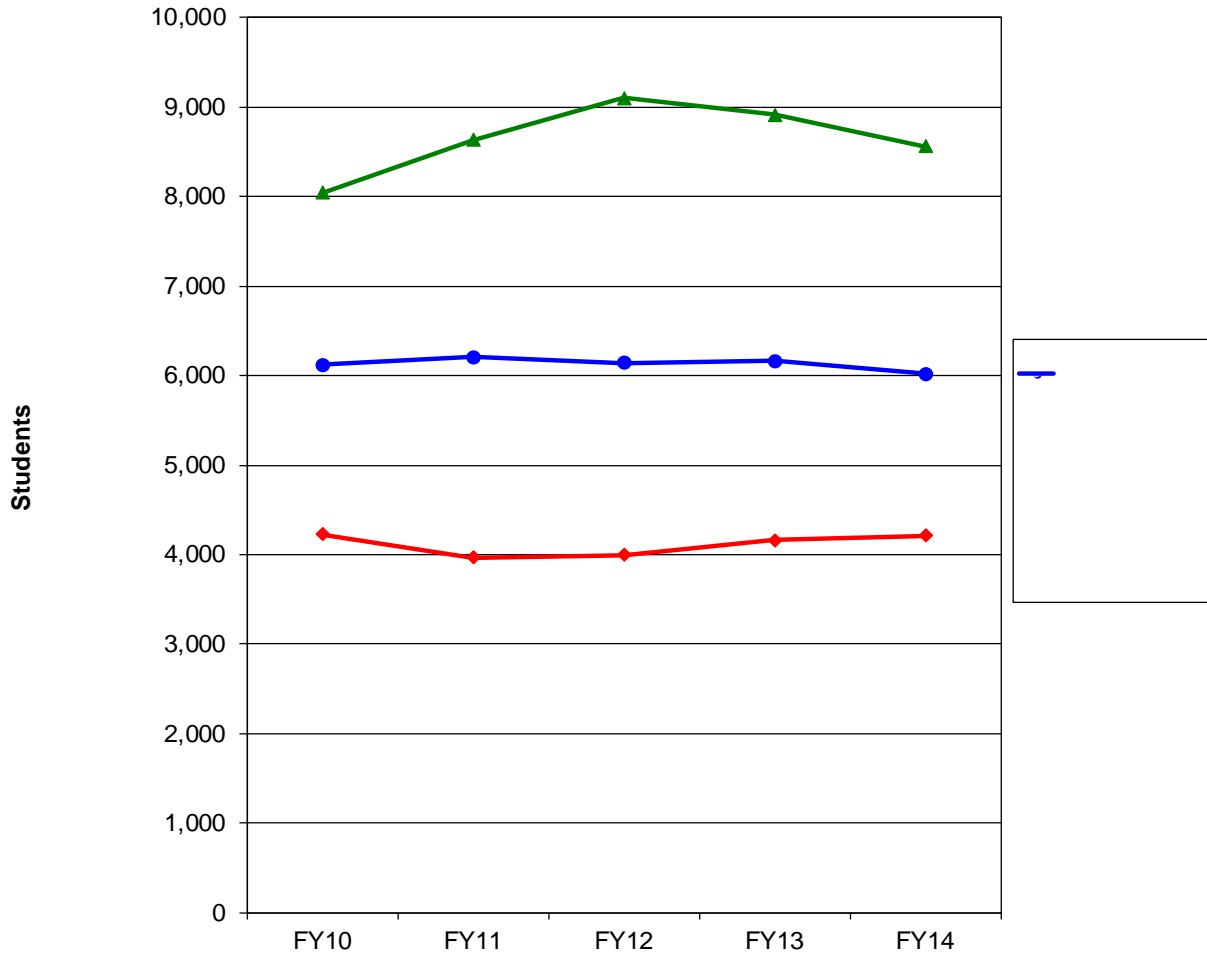
UM-Columbia (Table and Figure 2 series)

UM-Kansas City (Table and Figure 3 series)

Missouri S&T (Table and Figure 4 series)

UM-St. Louis (Table and Figure 5 series)

Figure 2.1
Financial Aid Status for Full-time, Degree-Seeking Missouri Undergraduates at
the University of Missouri-Columbia, FY10 - FY14



| | FY10 | FY11 | FY12 | FY13 | FY14 | 5-yr # Change | 5-yr % Change |
|---|---------------|---------------|---------------|---------------|---------------|------------------|------------------|
| Completed FAFSA, did not have a need | 4,222 | 4,140 | 4,146 | 4,157 | 3,956 | -266 | -6.3% |
| Grant aid, no FAFSA | <u>1,898</u> | <u>2,070</u> | <u>1,995</u> | <u>2,007</u> | <u>2,061</u> | <u>163</u> | 8.6% |
| Aid recipients with no need | 6,120 | 6,210 | 6,141 | 6,164 | 6,017 | -103 | -1.7% |
| Aid recipients with need* | 8,044 | 8,636 | 9,100 | 8,911 | 8,559 | 515 | 6.4% |
| Full pay / No aid | 4,229 | 3,966 | 3,996 | 4,162 | 4,216 | -13 | -0.3% |
| Total of all full-time, Degree-Seeking Non-Res | 18,893 | 18,812 | 19,237 | 19,237 | 18,792 | 399 | 2.2% |

* All aid recipients with need completed a FAFSA and were not expected to pay the entire cost of attendance.

| | FY10 | FY11 | FY12 | FY13 | FY14 | 5-yr # Change | 5-yr % Change |
|-----------------------------|------|------|------|------|------|------------------|------------------|
| Budgeted Cost of Attendance | | | | | | | |

Table 2.1

Students with Need

| Type of Award | # of Awards | Average Award | # of Awards | Average Award | # of Awards | Average Award | # of Awards | Average Award | # of Awards | Average Award |
|---------------|-------------|---------------|-------------|---------------|-------------|---------------|-------------|---------------|-------------|---------------|
| Need* | 3,136 | \$2,034 | 2,558 | \$2,427 | 3,189 | \$2,762 | 3,380 | \$2,749 | 3,546 | \$2,862 |
| Merit | 2,688 | \$2,949 | 2,922 | \$2,886 | 3,104 | \$2,877 | 3,104 | \$2,802 | 2,919 | \$2,929 |
| Other** | 799 | \$3,607 | 792 | \$3,697 | 813 | \$4,031 | 741 | \$4,230 | 961 | \$3,295 |
| Total | 6,623 | \$2,595 | 6,272 | \$2,801 | 7,106 | \$2,957 | 7,225 | \$2,924 | 7,426 | \$2,945 |

Students without Need

| Type of Award | # of Awards | Average Award | # of Awards | Average Award | # of Awards | Average Award | # of Awards | Average Award | # of Awards | Average Award |
|---------------|-------------|---------------|-------------|---------------|-------------|---------------|-------------|---------------|-------------|---------------|
| Merit | 3,286 | \$2,847 | 3,173 | \$2,868 | 3,307 | \$2,794 | 3,431 | \$2,727 | 3,171 | \$2,824 |
| Other** | 625 | \$3,900 | 787 | \$3,937 | 705 | \$4,110 | 668 | \$4,691 | 837 | \$3,888 |
| Total | 3,911 | \$3,015 | 3,960 | \$3,081 | 4,012 | \$3,025 | 4,099 | \$3,047 | 4,008 | \$3,046 |

*Institutional grant aid awarded to students with need includes both need and merit-based aid.

**Includes athletic aid and tuition waivers.

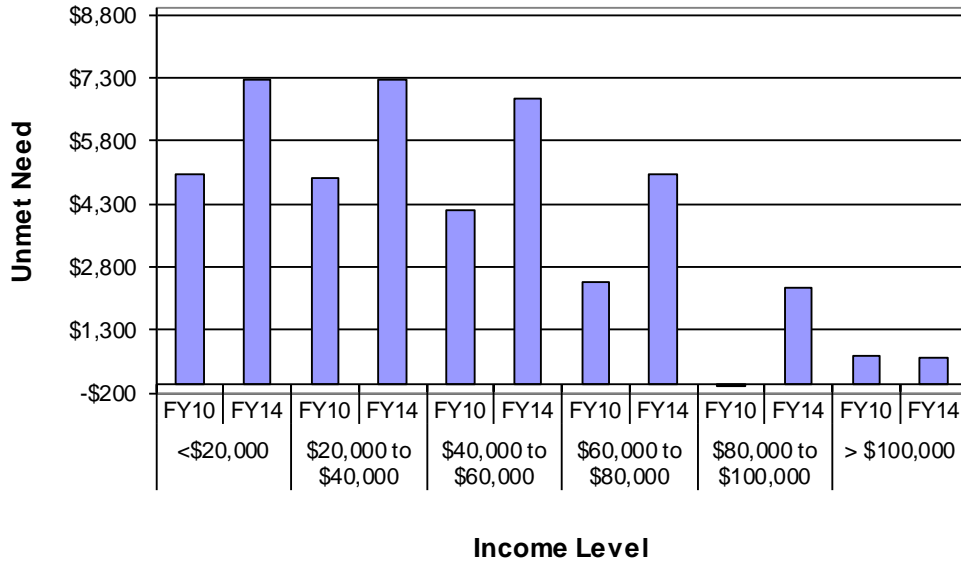
Source: PeopleSoft

Table 2.3
**Total Financial Aid as % of Cost of Attendance by Income Level at the University of Missouri-
Columbia, FY10 & FY14**

| Income Level | FY10 | | | | | FY14 | | | | |
|-----------------------|------------------------------|----------|------------|-------|-------------|------------------------------|----------|------------|-------|-------------|
| | % COA Met by Source of Aid | | | | % Unmet COA | % COA Met by Source of Aid | | | | % Unmet COA |
| | Expected Family Contribution | Gift Aid | Work Study | Loans | | Expected Family Contribution | Gift Aid | Work Study | Loans | |
| <\$20,000 | 3% | 40% | 1% | 32% | 24% | 1% | 37% | 1% | 30% | 31% |
| \$20,000 to \$40,00 | 7% | 40% | 2% | 28% | 24% | 6% | 36% | 1% | 26% | 31% |
| \$40,000 to \$60,000 | 25% | 29% | 2% | 25% | 20% | 19% | 29% | 1% | 22% | 29% |
| \$60,000 to \$80,000 | 47% | 20% | 1% | 21% | 12% | 38% | 20% | 0% | 20% | 22% |
| \$80,000 to \$100,000 | 69% | 15% | 0% | 16% | 0% | 59% | 14% | 0% | 17% | 10% |
| >\$100,000 | 68% | 12% | 0% | 17% | 3% | 71% | 11% | 0% | 15% | 3% |

Source: PeopleSoft
IR&P/LCB 11/14

Figure 2.5
Average Amount of Unmet Financial Need by Income Level at
the UM-Columbia, FY10 vs. FY14



Source: UIDS, PeopleSoft
 IR&P/LCB 11/14

Table 2.5

| FY10 | FY11 | FY12 | FY13 | FY14 | FY10 | FY11 | FY12 | FY13 | FY14 | # Change |
|------|------|------|------|------|------|------|------|------|------|----------|
|------|------|------|------|------|------|------|------|------|------|----------|

| | FY10 | FY11 | FY12 | FY13 | FY14 | 5-yr # Change | 5-yr % Change |
|---|------------|------------|------------|------------|------------|------------------|------------------|
| Completed FAFSA, did not have a need | 511 | 484 | 529 | 553 | 556 | 45 | 8.8% |
| Grant aid, no FAFSA | <u>314</u> | <u>314</u> | <u>307</u> | <u>308</u> | <u>293</u> | <u>-21</u> | -6.7% |
| Aid recipients with no need | 825 | 798 | 836 | 861 | 849 | 24 | 2.9% |
| Aid recipients with need* | 2,875 | 3,173 | 3,255 | 3,252 | 3,211 | 336 | 11.7% |
| Full pay / No aid | 443 | 476 | 476 | 477 | 440 | -3 | -0.7% |
| Total of all full- time, Degree-Seeking MO UG | 4,143 | 4,447 | 4,567 | 4,590 | 4,500 | 357 | 8.6% |

| | FY10 | FY11 | FY12 | FY13 | FY14 | 5-yr # Change | 5-yr % Change |
|-----------------------------|----------|----------|----------|----------|----------|------------------|------------------|
| Budgeted Cost of Attendance | \$24,892 | \$25,904 | \$26,516 | \$24,562 | \$24,441 | -\$451 | -1.8% |
| Tuition & Required Fees | \$8,273 | \$8,602 | \$9,029 | \$9,299 | \$9,456 | \$1,183 | 14.3% |
| Average Grant Aid | \$4,915 | \$4,694 | \$4,578 | \$4,673 | \$4,833 | -\$82 | -1.7% |

Table 3.1

Average Institutional Grant Awards Distributed to Resident, Full-time, Degree-Seeking Undergraduates at the University of Missouri-Kansas City, FY10- FY14

| Students with Need | FY10 | | FY11 | | FY12 | | FY13 | | FY14 | |
|-----------------------|--------------|----------------|--------------|----------------|--------------|----------------|--------------|----------------|--------------|----------------|
| | # of Awards | Average Award | # of Awards | Average Award | # of Awards | Average Award | # of Awards | Average Award | # of Awards | Average Award |
| Type of Award Need* | 118 | \$2,008 | 122 | \$1,796 | 154 | \$1,452 | 360 | \$2,227 | 321 | \$2,450 |
| Merit | 1,163 | \$3,722 | 1,262 | \$3,155 | 1,392 | \$3,234 | 1,300 | \$2,858 | 1,375 | \$2,864 |
| Other** | 103 | \$3,087 | 98 | \$3,713 | 84 | \$4,850 | 95 | \$5,020 | 105 | \$5,118 |
| Total | 1,384 | \$3,529 | 1,482 | \$3,080 | 1,630 | \$3,149 | 1,755 | \$2,845 | 1,801 | \$2,922 |
| | | | | | | | | | | |
| Students without Need | FY10 | | FY11 | | FY12 | | FY13 | | FY14 | |
| | # of Awards | Average Award | # of Awards | Average Award | # of Awards | Average Award | # of Awards | Average Award | # of Awards | Average Award |
| Type of Award | | | | | | | | | | |
| Merit | 531 | \$3,294 | 562 | \$3,226 | 581 | \$3,228 | 605 | \$3,362 | 609 | \$3,324 |
| Other** | 49 | \$5,632 | 41 | \$5,524 | 51 | \$4,207 | 48 | \$5,604 | 53 | \$6,710 |
| Total | 580 | \$3,491 | 603 | \$3,382 | 632 | \$3,307 | 653 | \$3,527 | 662 | \$3,595 |

*Institutional grant aid awarded to students with need includes both need and merit-based aid.

**Includes athletic aid and tuition waivers.

Source: PeopleSoft

IR&P/LCB 11/14

Table 3.2

Total Grant Aid as % of Tuition & Required Fees and % Total Cost of Attendance by Income Level at the University of Missouri-Kansas City, FY10 & FY14

| Income Level | FY10 | | | FY14 | | |
|-----------------------|-----------|---------------------------|----------------------------|-----------|---------------------------|----------------------------|
| | Grant Aid | % Tuition & Required Fees | % Total Cost of Attendance | Grant Aid | % Tuition & Required Fees | % Total Cost of Attendance |
| <\$20,000 | \$7,054 | 85% | 28% | \$6,385 | 68% | 26% |
| \$20,000 to \$40,000 | \$6,493 | 78% | 26% | \$6,165 | 65% | 25% |
| \$40,000 to \$60,000 | \$4,626 | 56% | 19% | \$5,235 | 55% | 21% |
| \$60,000 to \$80,000 | \$3,216 | 39% | 13% | \$3,513 | 37% | 14% |
| \$80,000 to \$100,000 | \$3,044 | 37% | 12% | \$2,589 | 27% | 11% |
| >\$100,000 | \$3,310 | 40% | 13% | \$2,733 | 29% | 11% |

Source: Institutional Characteristics & PeopleSoft

IR&P/LCB 11/14

Table 3.3

Total Financial Aid as % of Cost of Attendance by Income Level at the University of Missouri-Kansas City, FY10 & FY14

| Income Level | FY10 | | | | | FY14 | | | | |
|-----------------------|------------------------------|----------|------------|-------|-------------|------------------------------|----------|------------|-------|-------------|
| | % COA Met by Source of Aid | | | | % Unmet COA | % COA Met by Source of Aid | | | | % Unmet COA |
| | Expected Family Contribution | Gift Aid | Work Study | Loans | | Expected Family Contribution | Gift Aid | Work Study | Loans | |
| <\$20,000 | 3% | 28% | 3% | 30% | 37% | 2% | 26% | 3% | 30% | 39% |
| \$20,000 to \$40,00 | 9% | 26% | 3% | 23% | 39% | 7% | 25% | 2% | 26% | 40% |
| \$40,000 to \$60,000 | 21% | 19% | 3% | 20% | 37% | 17% | 21% | 1% | 22% | 38% |
| \$60,000 to \$80,000 | 41% | 13% | 2% | 18% | 27% | 33% | 14% | 1% | 19% | 32% |
| \$80,000 to \$100,000 | 62% | 12% | 1% | 15% | 9% | 55% | 11% | 1% | 18% | 16% |
| >\$100,000 | 70% | 13% | 1% | 13% | 3% | 73% | 11% | 1% | 13% | 2% |

Source: PeopleSoft
IR&P/LCB 11/14

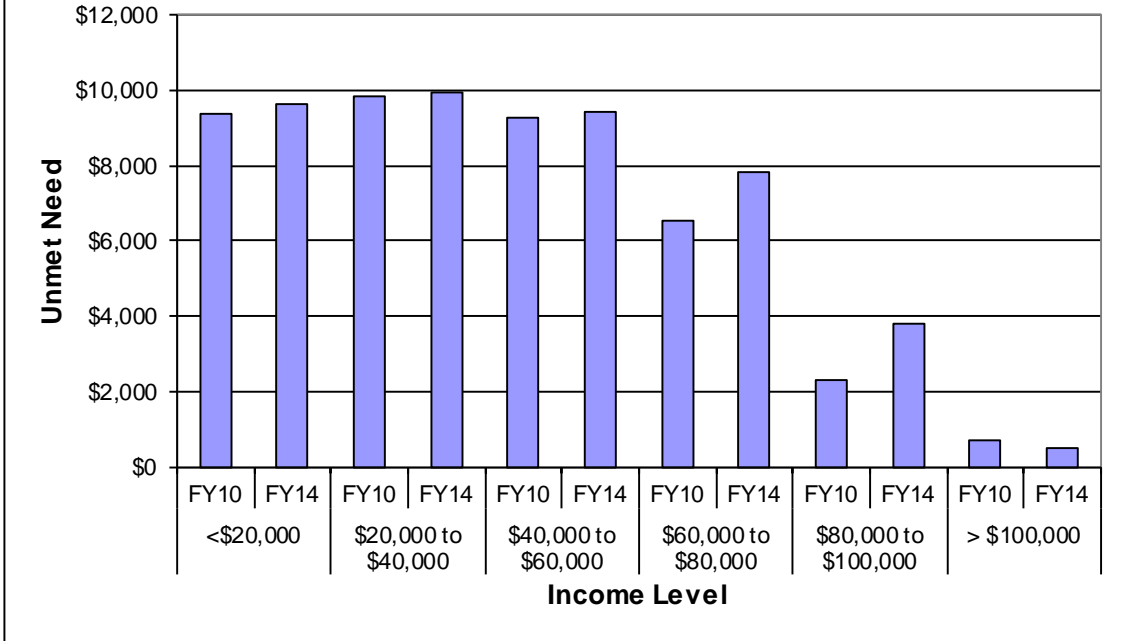
Table 3.4

Average PLUS Loan Awarded to PLUS Loan Recipients, Resident, Full-time, Degree-Seeking Undergraduates by Financial Need at the University of Missouri-Kansas City, FY10 - FY14

| | FY10 | | FY11 | | FY12 | | FY13 | | FY14 | |
|--------------|------|----------|------|----------|------|----------|------|----------|------|----------|
| | N | Mean | N | Mean | N | Mean | N | Mean | N | Mean |
| With Need | 378 | \$9,801 | 410 | \$10,953 | 401 | \$10,976 | 371 | \$10,464 | 323 | \$10,602 |
| Without Need | 145 | 10,850 | 121 | 10,321 | 132 | 12,118 | 134 | 12,396 | 134 | 10,908 |
| | 523 | \$10,092 | 531 | \$10,809 | 533 | \$11,259 | 505 | \$10,976 | 457 | \$10,691 |

Source: PeopleSoft
IR&P/LCB 11/14

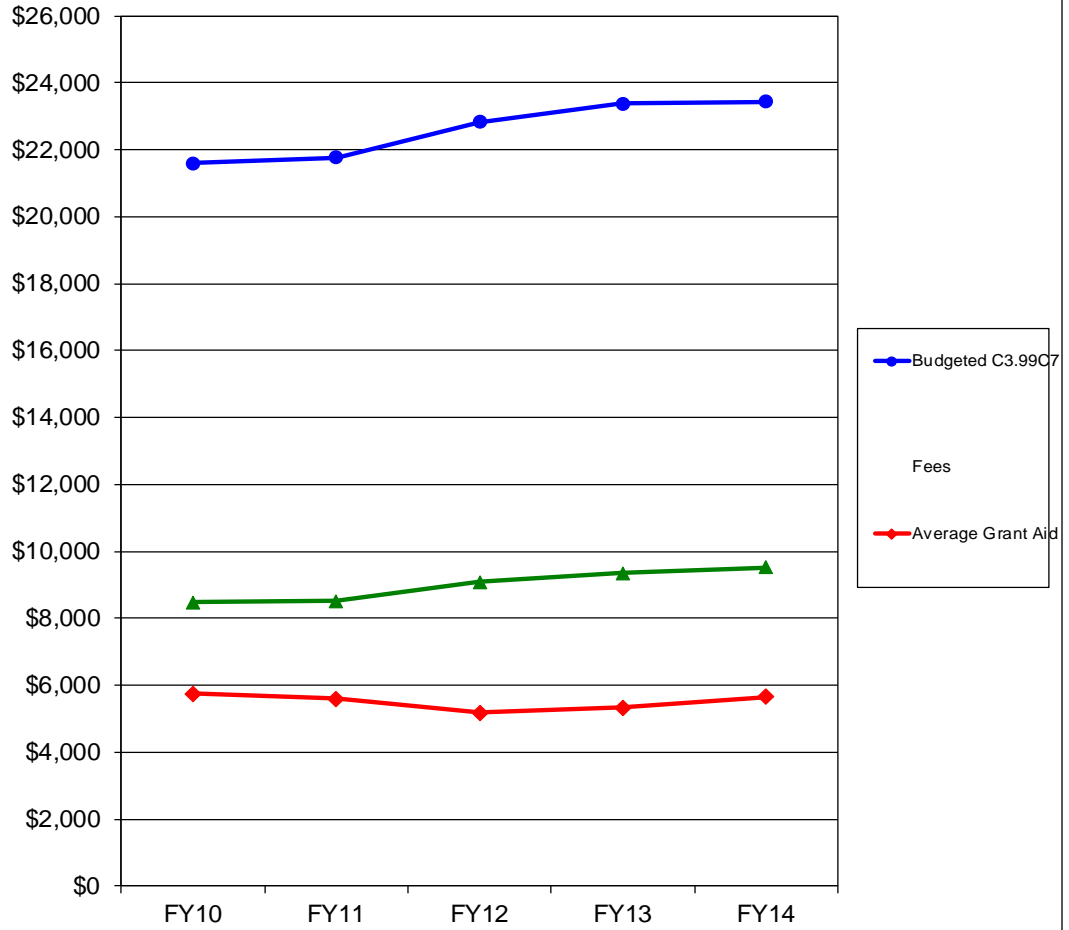
Figure 3.5
Average Amount of Unmet Financial Need by Income Level at
the UM-Kansas City, FY10 vs. FY14



Source: UIDS, PeopleSoft
 IR&P/LCB 11/14

5-yr

Figure 4.2
Tuition and Required Fees vs. 9-Month Cost of Attendance and Grant Aid for Full-time Undergraduate Missouri Residents at Missouri S&T, FY10 - FY14



| | FY10 | FY11 | FY12 | FY13 | FY14 | 5-yr # Change | 5-yr % Change |
|-----------------------------|----------|----------|----------|----------|----------|------------------|------------------|
| Budgeted Cost of Attendance | \$21,599 | \$21,766 | \$22,828 | \$23,379 | \$23,438 | \$1,839 | 8.5% |
| Tuition & Required Fees | \$8,488 | \$8,528 | \$9,084 | \$9,350 | \$9,519 | \$1,031 | 12.1% |
| Average Grant Aid | \$5,745 | \$5,608 | \$5,181 | \$5,338 | \$5,661 | -\$84 | -1.5% |

Source: Institutional Characteristics & PeopleSoft
 IR&P/LCB 11/14

Table 4.3

| Income Level | Expected | | | | | Expected | | | | |
|----------------------|---------------------|----------|------------|-------|-------------|---------------------|----------|------------|-------|-------------|
| | Family Contribution | Gift Aid | Work Study | Loans | % Unmet COA | Family Contribution | Gift Aid | Work Study | Loans | % Unmet COA |
| <\$20,000 | 2% | 40% | 2% | 31% | 25% | 1% | 33% | 1% | 31% | 33% |
| \$20,000 to \$40,00 | 7% | 42% | 1% | 23% | 27% | 5% | 36% | 1% | 26% | 32% |
| \$40,000 to \$60,000 | 21% | 34% | 0% | 20% | 25% | 32% | | | | |

Source: PeopleSoft
IR&P/LCB 11/14

Source: UIDS, PeopleSoft
IR&P/LCB 11/14

Table 4.5

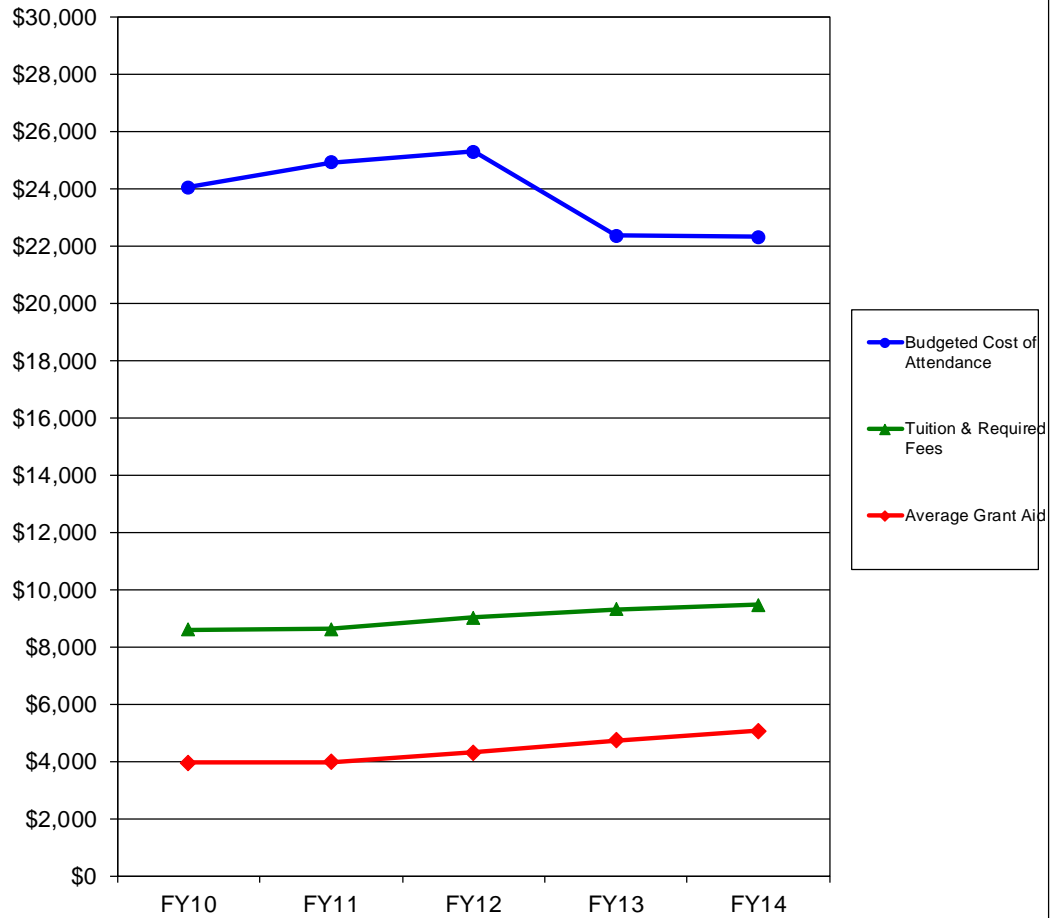
| | FY10 | FY11 | FY12 | FY13 | FY14 | FY10 | FY11 | FY12 | FY13 | FY14 | # Change FY10-FY14 | % Change FY10-FY14 |
|---|--------------|--------------|--------------|--------------|--------------|------|------|------|------|------|-------------------------|-----------------------|
| Total Enrolled for 9 months (N) | 412 | 403 | 475 | 492 | 482 | | | | | | 70 | 17% |
| Cost of Attendance | \$21,767 | \$21,847 | \$22,924 | \$23,447 | \$23,509 | | | | | | \$1,742 | 8% |
| Less Expected Family Contribution* | <u>416</u> | <u>553</u> | <u>397</u> | <u>233</u> | <u>310</u> | 2% | 3% | 2% | 1% | 1% | -106 | -25% |
| Financial Need | 21,350 | 21,294 | 22,527 | 23,214 | 23,199 | 98% | 97% | 98% | 99% | 99% | 1,848 | 9% |
| Less Grant Aid | 8,763 | 8,594 | 7,279 | 7,735 | 7,873 | 40% | 39% | 32% | 33% | 33% | -890 | -10% |
| Unmet Need | \$12,587 | \$12,700 | \$15,248 | \$15,479 | \$15,326 | 58% | 58% | 67% | 66% | 65% | 2,739 | 22% |
| % Grant Aid that Met Financial Need | 41% | 40% | 32% | 33% | 34% | | | | | | | |
| Non-Grant Sources to Meet Remaining Unmet Financial Need | | | | | | | | | | | | |
| College Work Study | \$475 | \$266 | \$342 | \$317 | \$292 | 2% | 1% | 1% | 1% | 1% | -183 | -39% |
| Need-based Loans | 3,989 | 4,094 | 4,483 | 4,376 | 3,904 | 18% | 19% | 20% | 19% | 17% | -85 | -2% |
| Non-Need Based Loans | 2,761 | 3,058 | 3,793 | 3,294 | 3,362 | 13% | 14% | 17% | 14% | 14% | 601 | 22% |
| Remaining Unmet Need | \$5,363 | \$5,282 | \$6,631 | \$7,492 | \$7,768 | 25% | 24% | 29% | 32% | 33% | 2,405 | 45% |
| *Amount Borrowed to meet EFC | \$262 | \$308 | \$214 | \$95 | \$141 | 1% | 1% | 1% | 0% | 1% | -121 | -46% |
| | FY10 | FY11 | FY12 | FY13 | FY14 | FY10 | FY11 | FY12 | FY13 | FY14 | # Change FY10-FY14 | % Change FY10-FY14 |
| Total Enrolled for 9 months (N) | 376 | 405 | 420 | 400 | 399 | | | | | | 23 | 6% |
| Cost of Attendance | \$21,614 | \$21,799 | \$22,839 | \$23,374 | \$23,388 | | | | | | \$1,774 | 8% |
| Less Expected Family Contribution* | <u>1,600</u> | <u>1,491</u> | <u>1,238</u> | <u>1,462</u> | <u>1,161</u> | 7% | 7% | 5% | 6% | 5% | -439 | -27% |
| Financial Need | 20,015 | 20,307 | 21,601 | 21,912 | 22,228 | 93% | 93% | 95% | 94% | 95% | 2,213 | 11% |
| Less Grant Aid | 8,977 | 8,909 | 8,120 | 7,762 | 8,408 | 42% | 41% | 36% | 33% | 36% | -569 | -6% |
| Unmet Need | \$11,038 | \$11,399 | \$13,481 | \$14,150 | \$13,820 | 51% | 52% | 59% | 61% | 59% | 2,782 | 25% |
| % Grant Aid that Met Financial Need | 45% | 44% | 38% | 35% | 38% | | | | | | | |
| Non-Grant Sources to Meet Remaining Unmet Financial Need | | | | | | | | | | | | |
| College Work Study | \$268 | \$238 | \$281 | \$220 | \$217 | 1% | 1% | 1% | 1% | 1% | -51 | -19% |
| Need-based Loans | 3,687 | 3,647 | 4,083 | 3,804 | 3,881 | 17% | 17% | 18% | 16% | 17% | 194 | 5% |
| Non-Need Based Loans | 1,276 | 1,788 | 2,336 | 2,060 | 2,196 | 6% | 8% | 10% | 9% | 9% | 920 | 72% |
| Remaining Unmet Need | \$5,807 | \$5,725 | \$6,781 | \$8,065 | \$7,525 | 27% | 26% | 30% | 35% | 32% | 1,718 | 30% |
| *Amount Borrowed to meet EFC | \$730 | \$730 | \$637 | \$657 | \$580 | 3% | 3% | 3% | 3% | 2% | -151 | -21% |
| | FY10 | FY11 | FY12 | FY13 | FY14 | FY10 | FY11 | FY12 | FY13 | FY14 | # Change FY10-4(Y)3: | |

Table 4.5 (Continued)

| | FY10 | FY11 | FY12 | FY13 | FY14 | FY10 | FY11 | FY12 | FY13 | FY14 | # Change FY10-FY14 | % Change FY10-FY14 |
|---|---------------|---------------|---------------|---------------|---------------|------|------|------|------|------|-----------------------|-----------------------|
| Total Enrolled for 9 months (N) | 370 | 440 | 388 | 389 | 418 | | | | | | 48 | 13% |
| Cost of Attendance | \$21,567 | \$21,749 | \$22,809 | \$23,323 | \$23,454 | | | | | | \$1,887 | 9% |
| Less Expected Family Contribution* | <u>8,502</u> | <u>8,093</u> | <u>8,685</u> | <u>8,475</u> | <u>8,168</u> | 39% | 37% | 38% | 36% | 35% | -334 | -4% |
| Financial Need | 13,065 | 13,656 | 14,124 | 14,847 | 15,286 | 61% | 63% | 62% | 64% | 65% | 2,221 | 17% |
| Less Grant Aid | 4,539 | 4,794 | 4,003 | 4,658 | 5,202 | 21% | 22% | 18% | 20% | 22% | 663 | 15% |
| Unmet Need | \$8,526 | \$8,862 | \$10,121 | \$10,189 | \$10,084 | 40% | 41% | 44% | 44% | 43% | 1,558 | 18% |
| % Grant Aid that Met Financial Need | 35% | 35% | 28% | 31% | 34% | | | | | | | |
| Non-Grant Sources to Meet Remaining Unmet Financial Need | | | | | | | | | | | | |
| College Work Study | \$14 | \$5 | \$26 | \$36 | \$18 | 0% | 0% | 0% | 0% | 0% | 4 | |
| Need-based Loans | 3,475 | 3,431 | 3,585 | 3,327 | 3,271 | 16% | 16% | 16% | 14% | 14% | -203 | -6% |
| Non-Need Based Loans | 352 | 1,046 | 1,377 | 1,510 | 1,206 | 2% | 5% | 6% | 6% | 5% | 854 | 243% |
| Remaining Unmet Need | \$4,685 | \$4,381 | \$5,133 | \$5,317 | \$5,588 | 22% | 20% | 23% | 23% | 24% | 903 | 19% |
| *Amount Borrowed to meet EFC | \$2,627 | \$2,807 | \$2,994 | \$6,427 | \$2,972 | 12% | 13% | 13% | 28% | 13% | 346 | 13% |
| | FY10 | FY11 | FY12 | FY13 | FY14 | FY10 | FY11 | FY12 | FY13 | FY14 | # Change FY10-FY14 | % Change FY10-FY14 |
| Total Enrolled for 9 months (N) | 336 | 343 | 371 | 377 | 379 | | | | | | 43 | 13% |
| Cost of Attendance | \$21,559 | \$21,718 | \$22,793 | \$23,357 | \$23,437 | | | | | | \$1,878 | 9% |
| Less Expected Family Contribution* | <u>12,896</u> | <u>12,374</u> | <u>12,536</u> | <u>12,498</u> | <u>12,144</u> | 60% | 57% | 55% | 54% | 52% | -752 | -6% |
| Financial Need | 8,663 | 9,344 | 10,257 | 10,859 | 11,293 | 40% | 43% | 45% | 46% | 48% | 2,630 | 30% |
| Less Grant Aid | 3,626 | 3,896 | 3,820 | 3,920 | 4,064 | 17% | 18% | 17% | 17% | 17% | 438 | 12% |
| Unmet Need | \$5,036 | \$5,449 | \$6,437 | \$6,939 | \$7,229 | 23% | 25% | 28% | 30% | | | |

| | FY10 | FY11 | FY12 | FY13 | FY14 | 5-yr # Change | 5-yr % Change |
|--------------------------------------|------------|------------|------------|------------|------------|------------------|------------------|
| Completed FAFSA, did not have a need | 493 | 424 | 390 | 531 | 504 | 11 | 2.2% |
| Grant aid, no FAFSA | <u>331</u> | <u>360</u> | <u>324</u> | <u>272</u> | <u>285</u> | <u>-46</u> | -13.9% |

Figure 5.2
Tuition and Required Fees vs. 9-Month Cost of Attendance and Grant Aid for
Full-time Undergraduate Missouri Residents at the
University of Missouri-St. Louis, FY10 - FY14



| | FY10 | FY11 | FY12 | FY13 | FY14 | 5-yr # Change | 5-yr % Change |
|-----------------------------|----------|----------|----------|----------|----------|------------------|------------------|
| Budgeted Cost of Attendance | \$24,056 | \$24,915 | \$25,299 | \$22,364 | \$22,324 | -\$1,732 | -7.2% |
| Tuition & Required Fees | \$8,595 | \$8,631 | \$9,038 | \$9,314 | \$9,474 | \$879 | 10.2% |
| Average Grant Aid | \$3,952 | \$3,983 | \$4,317 | \$4,746 | \$5,071 | \$1,118 | 28.3% |

Source: Institutional Characteristics & PeopleSoft
 IR&P/LCB 11/14

Table 5.1

Students with Need

| Type of Award Need* | # of Awards | Average Award | # of Awards | Average Award | # of Awards | Average Award | # of Awards | Average Award | # of Awards | Average Award |
|---------------------|-------------|---------------|-------------|---------------|-------------|---------------|-------------|---------------|-------------|---------------|
| | 121 | \$2,744 | 118 | \$2,896 | 456 | \$1,697 | 979 | \$1,573 | 1,429 | \$1,569 |

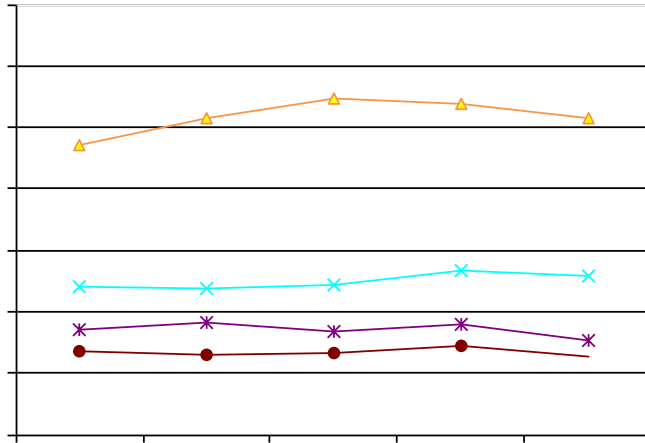
Table 5.3
**Total Financial Aid as % of Cost of Attendance by Income Level at the University of Missouri-
 St. Louis, FY10 & FY14**

| Income Level | FY10 | | | | | FY14 | | | | |
|-----------------------|------------------------------|----------|------------|-------|-------------|------------------------------|----------|------------|-------|-------------|
| | % COA Met by Source of Aid | | | | % Unmet COA | % COA Met by Source of Aid | | | | % Unmet COA |
| | Expected Family Contribution | Gift Aid | Work Study | Loans | | Expected Family Contribution | Gift Aid | Work Study | Loans | |
| <\$20,000 | 3% | 22% | 1% | 31% | 44% | 2% | 27% | 0% | 30% | 41% |
| \$20,000 to \$40,00 | 9% | 21% | 0% | 23% | 46% | 8% | 28% | 0% | 21% | 42% |
| \$40,000 to \$60,000 | 21% | 16% | 0% | 19% | 45% | 18% | 24% | 0% | 20% | 38% |
| \$60,000 to \$80,000 | 44% | 11% | 0% | 17% | 28% | 38% | 17% | 0% | 17% | 27% |
| \$80,000 to \$100,000 | 65% | 9% | 0% | 14% | 12% | 61% | 14% | 0% | 15% | 10% |
| >\$100,000 | 67% | 10% | 0% | 16% | 6% | 72% | 16% | 0% | 13% | -1% |

Source: PeopleSoft
 IR&P/LCB 11/14

Table 5.4

| | N | Mean | N | Mean | N | Mean | N | Mean | N | Mean |
|--------------|-----|---------|-----|---------|-----|---------|---------------|------------------|---------------|------------------|
| With Need | 201 | \$9,264 | 251 | \$8,533 | 247 | \$8,475 | 157 | \$8,577 | 170 | \$8,702 |
| Without Need | 92 | 9,368 | 85 | 9,036 | 77 | 8,626 | 83 | 8,254 | 82 | 7,686 |
| | 293 | \$9,297 | 336 | \$8,660 | 324 | | | | | |



Source: PeopleSoft
IR&P/LCB 11/14

Source: UIDS, PeopleSoft
IR&P/LCB 11/14

Table 5.5 (Continued)

| | FY10 | FY11 | FY12 | FY13 | FY14 | FY10 | FY11 | FY12 | FY13 | FY14 | # Change FY10-FY14 | % Change FY10-FY14 |
|---|---------------|---------------|---------------|---------------|---------------|------|------|------|------|------|-----------------------|-----------------------|
| Total Enrolled for 9 months (N) | 272 | 262 | 267 | 290 | 255 | | | | | | -17 | -6% |
| Cost of Attendance | \$23,508 | \$24,038 | \$24,342 | \$21,733 | \$21,782 | | | | | | -\$1,726 | -7% |
| Less Expected Family Contribution* | <u>10,407</u> | <u>9,257</u> | <u>9,453</u> | <u>8,663</u> | <u>8,264</u> | 44% | 39% | 39% | 40% | 38% | -2,142 | -21% |
| Financial Need | 13,102 | 14,781 | 14,889 | 13,069 | 13,518 | 56% | 61% | 61% | 60% | 62% | 416 | 3% |
| Less Grant Aid | 2,475 | 2,675 | 2,927 | 3,716 | 3,759 | 11% | 11% | 12% | 17% | 17% | 1,284 | 52% |
| Unmet Need | \$10,627 | \$12,106 | \$11,961 | \$9,353 | \$9,759 | 45% | 50% | 49% | 43% | 45% | -868 | -8% |
| % Grant Aid that Met Financial Need | 19% | 18% | 20% | 28% | 28% | | | | | | | |
| Non-Grant Sources to Meet Remaining Unmet Financial Need | | | | | | | | | | | | |
| College Work Study | \$27 | \$38 | \$24 | \$12 | \$0 | 0% | 0% | 0% | 0% | 0% | -27 | |
| Need-based Loans | 3,481 | 3,767 | 3,545 | 3,417 | 3,347 | 15% | 16% | 15% | 16% | 15% | -134 | -4% |
| Non-Need Based Loans | 631 | 414 | 455 | 506 | 449 | 3% | 2% | 2% | 2% | 2% | -182 | -29% |
| Remaining Unmet Need | \$6,488 | \$7,887 | \$7,937 | \$5,419 | \$5,964 | 28% | 33% | 33% | 25% | 27% | -524 | -8% |
| *Amount Borrowed to meet EFC | \$3,152 | \$2,651 | \$2,766 | \$2,653 | \$2,374 | 13% | 11% | 11% | 12% | 11% | -778 | -25% |
| | FY10 | FY11 | FY12 | FY13 | FY14 | FY10 | FY11 | FY12 | FY13 | FY14 | # Change FY10-FY14 | % Change FY10-FY14 |
| Total Enrolled for 9 months (N) | 198 | 207 | 198 | 228 | 229 | | | | | | 31 | 16% |
| Cost of Attendance | \$23,194 | \$24,154 | \$23,939 | \$21,458 | \$21,613 | | | | | | -\$1,581 | -7% |
| Less Expected Family Contribution* | <u>15,045</u> | <u>15,036</u> | <u>14,376</u> | <u>13,247</u> | <u>13,192</u> | 65% | 62% | 60% | 62% | 61% | -1,853 | -12% |
| Financial Need | 8,149 | 9,119 | 9,563 | 8,211 | 8,421 | 35% | 38% | 40% | 38% | 39% | 272 | 3% |
| Less Grant Aid | 2,086 | 2,277 | 2,730 | 2,820 | 3,101 | 9% | 9% | 11% | 13% | 14% | 1,014 | 49% |
| Unmet Need | \$6,062 | \$6,842 | \$6,832 | \$5,391 | \$5,320 | 26% | 28% | 29% | 25% | 25% | -742 | -12% |
| % Grant Aid that Met Financial Need | 26% | 25% | 29% | 34% | 37% | | | | | | | |
| Non-Grant 014 | | | | | | | | | | | | |